

# Nirwana Beach Club

Situated on the water's edge of Indonesia's Bintan Island, Nirwana Beach Club welcomes you to the ultimate rustic beachfront hideaway. Indulge in a variety of water sports, nature and the timeless traditions of a village-style living. Feel your spirits lifted amidst the spacious thatched-roof chalets, sunny beaches and a blue ocean, savouring relaxation and a boundless choice of tropical activities.

All rates in Singapore Dollars based on per person basis

(Validity: 1<sup>st</sup> Feb – 23<sup>rd</sup> Dec '10) 10PC

2 Days 1 Night Package	ADULT			CHILD (3 - 11 yrs)	
	TWIN	TRIPLE	SINGLE	NO BED	WITH BED
<b>WEEKDAYS</b>	88	88	125	48	76
<b>Extension Night</b>	44	44	82	15	43
<b>WEEKENDS</b>	116	112	170	58	84
<b>Extension Night</b>	59	53	113	15	43

**WEEKDAYS:** Sundays to Thursdays excluding Weekends & Peak Season Updated 010210)

**WEEKENDS:** Fridays and Saturdays and including Peak Season

**PEAK SEASON:** 12<sup>th</sup> – 15<sup>th</sup> Feb, 2<sup>nd</sup> – 3<sup>rd</sup> Apr, 30<sup>th</sup> Apr – 1<sup>st</sup> May, 28<sup>th</sup> – 29<sup>th</sup> May, 7<sup>th</sup> – 8<sup>th</sup> Aug,  
10<sup>th</sup> – 11<sup>th</sup> Sep and 5<sup>th</sup> – 6<sup>th</sup> Nov

**BLOCK OUT:** 21<sup>st</sup> – 22<sup>nd</sup> May (Triathlon)

**Package Inclusive Of:**

- Return ferry ticket (Singapore - Bintan Resorts - Singapore)
- One night accommodation at Nirwana Beach Club with Continental Breakfast
- 2 Way Land Transfers in Bintan Resorts (Ferry Terminal - Resort - Ferry Terminal)

**FERRY NOTES -> OFF PEAK: Mon-Thu except Eve of & PH // PEAK: Fri-Sun, Eve of PH & PH**

- EX-SIN on Off Peak days and EX-BIN on Peak days: Surcharge of \$6/Adt & \$4/Chd
- EX-SIN on Sun, 1<sup>st</sup> Apr, 27<sup>th</sup> May, 9<sup>th</sup> Sep, 4<sup>th</sup> Nov and EX-BIN on Peak days: Surcharge of \$11/Adt & \$8/Chd
- EX-SIN on Sun, 1<sup>st</sup> Apr, 27<sup>th</sup> May, 9<sup>th</sup> Sep, 4<sup>th</sup> Nov and EX-BIN on Off Peak days: Surcharge of \$6/Adt & \$4/Chd
- EX-SIN on Peak days and EX-BIN on Off Peak days: Discount of \$6/Adt & \$4/Chd

❖ Price for Extension Night includes continental breakfast

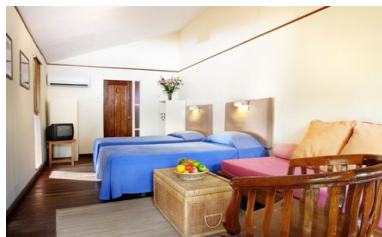
DAYTRIP PACKAGE	ADULT	CHILD (3 - 11 yrs)
<b>Weekday (Mon - Thurs)</b>	108	75
<b>Weekend (Fri - Sun, Eve of &amp; PH)</b>	120	83

**Daytrip Package Inclusive Of:**

- Return ferry ticket (Singapore - Bintan Resorts - Singapore)
- 2 Way Land Transfers in Bintan Resorts (Ferry Terminal - Resort - Ferry Terminal)
- 1 Set Lunch at Nirwana Beach Club Restaurant
- Usage of 1 selective watersport equipment for an hour. Snorkel set / Beginner Windsurf / Boggie Board / Ocean Kayak (Guest preference subject to availability & weather condition)
- Use of changing room facilities

**Applicable for both 2 Days 1 Night and Daytrip package**

- Taxes \$19.20 per pax is applicable on top of package price
- Child Below 3 yrs ~ 2 Way Ferry Ticket Applies. Off Peak - \$26 ; Peak - \$34 ; Combination Peak / Off Peak - \$30
- **UPGRADE TO EMERALD CLASS** (onboard Ferry 'Wan Seri Beni' & 'Wan Sendari' only) -> Surcharge of \$18/Adt/Way and \$5/Chd/way
- 2DIN / Full Daytrip Package rate apply if cancellation is made 4 days or less before departure
- In event of 'No Show', the full amount will be levied
- Prices are correct at time of printing and might be subject to change upon reservation.



**priceline**<sup>®</sup>

www.priceline.com.sg

Please submit Booking Form for reservation or email [sales.sg@hpcn.com](mailto:sales.sg@hpcn.com) for enquiry.